



The first residential elevator  
that runs merely by the  
atmospheric pressure.



# pneumatic vacuum elevators LLC

is an elevator that can carry you from floor to floor without cables, pulleys, or pistons. It is mounted on any finished floor eliminating the concept of a pit excavation and an engine room. There are three main parts to this transparent self-supporting vacuum elevator:

1. The outside tube which is made up of an aluminum frame and polycarbonate walls.
2. The steel cabin include brake and safety devices, a fan, and illumination.
3. The upper Control Compartment, which houses the turbines and the controller board.

## how does it work?

Under the American requirements and safety regulations, the pneumatic elevator is operated by turbines fitted at the cylinder top (hoist way) creating a low pressure above the cabin (car), causing the car to move upwards by the force of nature: the ambient atmospheric pressure.

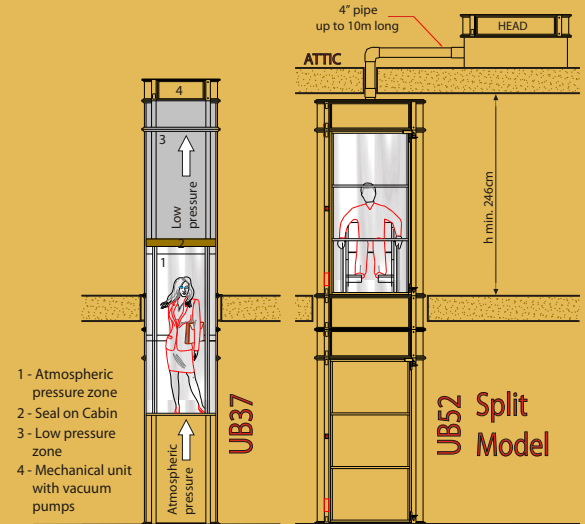
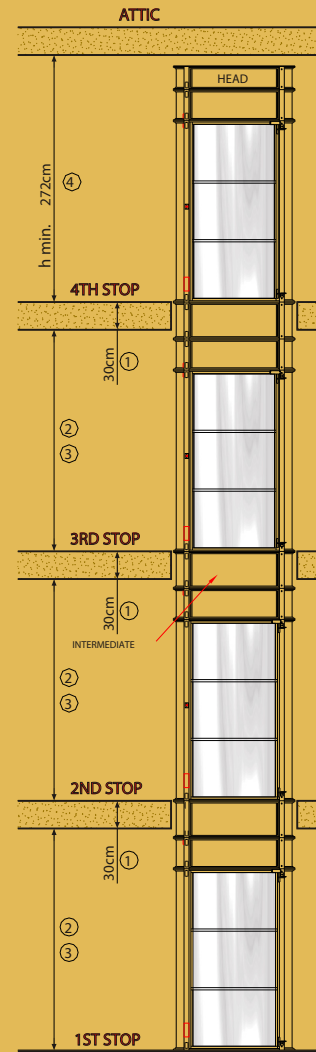
## home lift application

- Duplexes
- Villas
- Hotel Lobbies
- Banks
- Showrooms
- Boats

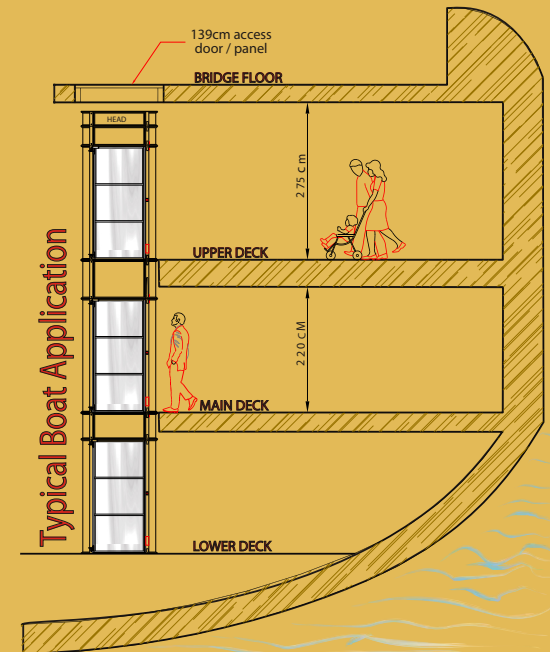


### General Specifications

| Item Ref. | Cabin Size Internal Ø | Shaft Size External Ø | Slab Ø Opening | Door Opening | Speed    | Capacity Person/Load | Max. Stops | Max. Travel |
|-----------|-----------------------|-----------------------|----------------|--------------|----------|----------------------|------------|-------------|
| UB37      | 81.3cm                | 94cm                  | 99cm           | 59.7cm       | 15cm/sec | 2 / 202Kg            | 4          | 10.67m      |
| UB52      | 120.6cm               | 133.8cm               | 139cm          | 81.3cm       | 15cm/sec | 3 / 238Kg            | 4          | 10.67m      |



- 1 - Atmospheric pressure zone
- 2 - Seal on Cabin
- 3 - Low pressure zone
- 4 - Mechanical unit with vacuum pumps



## outstanding feature

- Sleek modernistic design with a panoramic 360 degree view.
- 6-8 hour installation time for a 2 stop.
- Installed as an appliance (220V/50-60Hz) in a portable configuration. Power: 4.5Kw/30Amps.
- 24 volt internal circuits with no energy consumption during descent.
- No excavation or infrastructure required.
- Highest safety during power outages as it lowers itself automatically to the ground floor.
- Low maintenance with no lubrication required or any additional works after assembled.
- Extremely smooth dual speed starting and stopping operations.
- A three color frame selection: standard-navy gray, upgrades-light gray and white.
- Through-Type openings.

## Patents & certificates

- United States Patent #: US 5,447,211
- European Patent #: EP 0 550 904 B1
- LIFTINSTITUUT Certificate #: NL 04-400-1001-069-01 Amsterdam, under Machinery directive requirements 98/37/EC

